

Barco tipo granelero

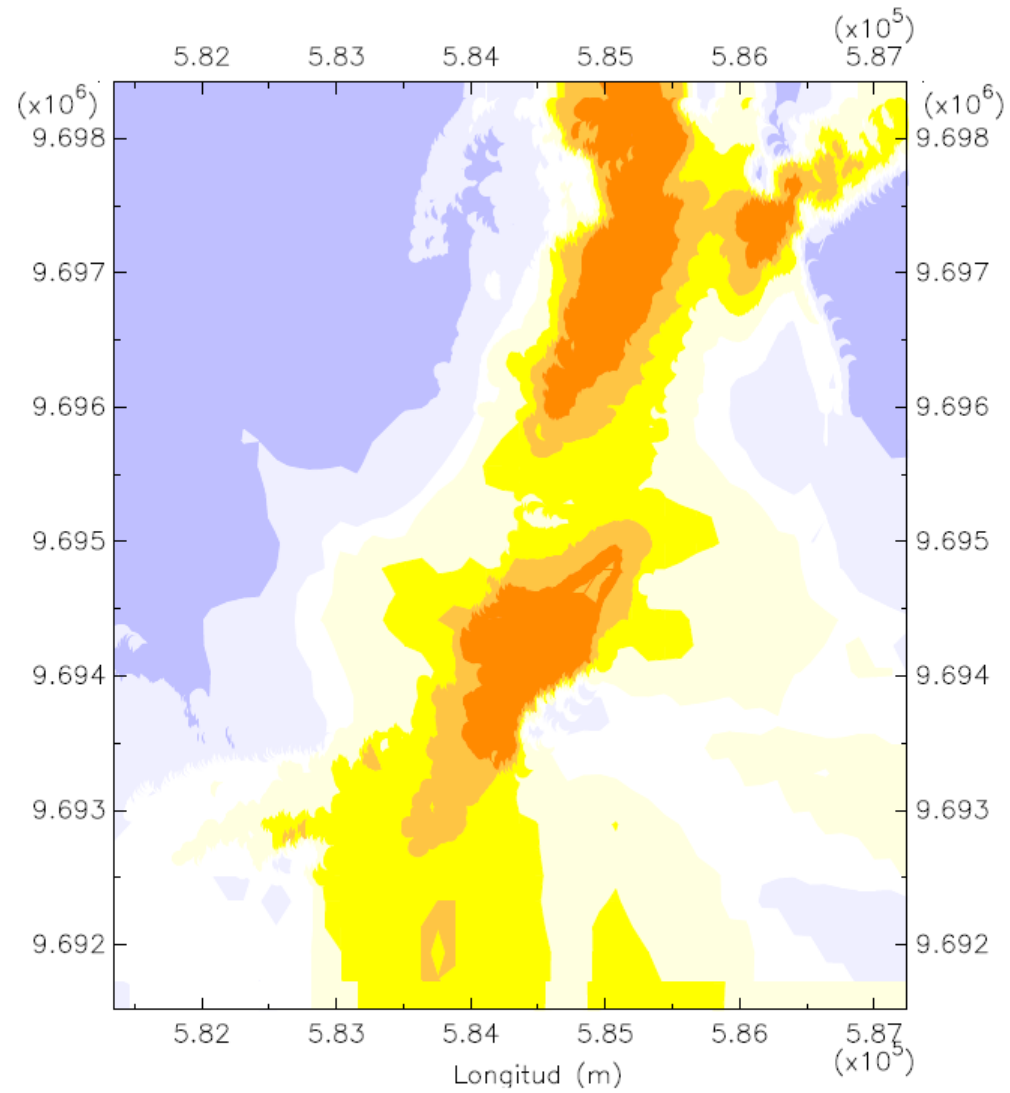
Eslora: 225 m

Manga: 32.20 m

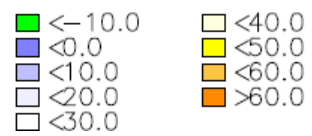
Calado: 12 m

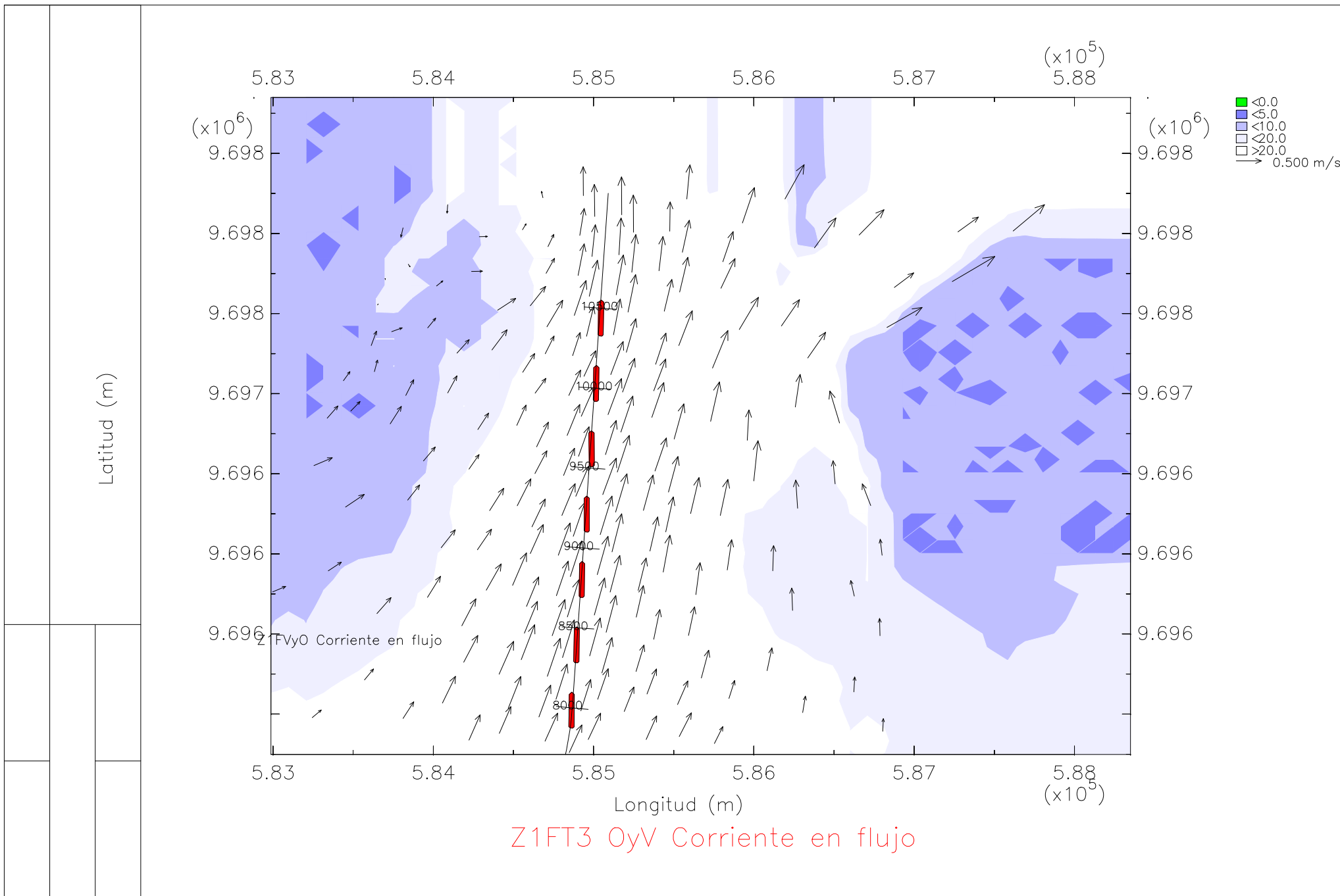
En la zona 1, tramo 3

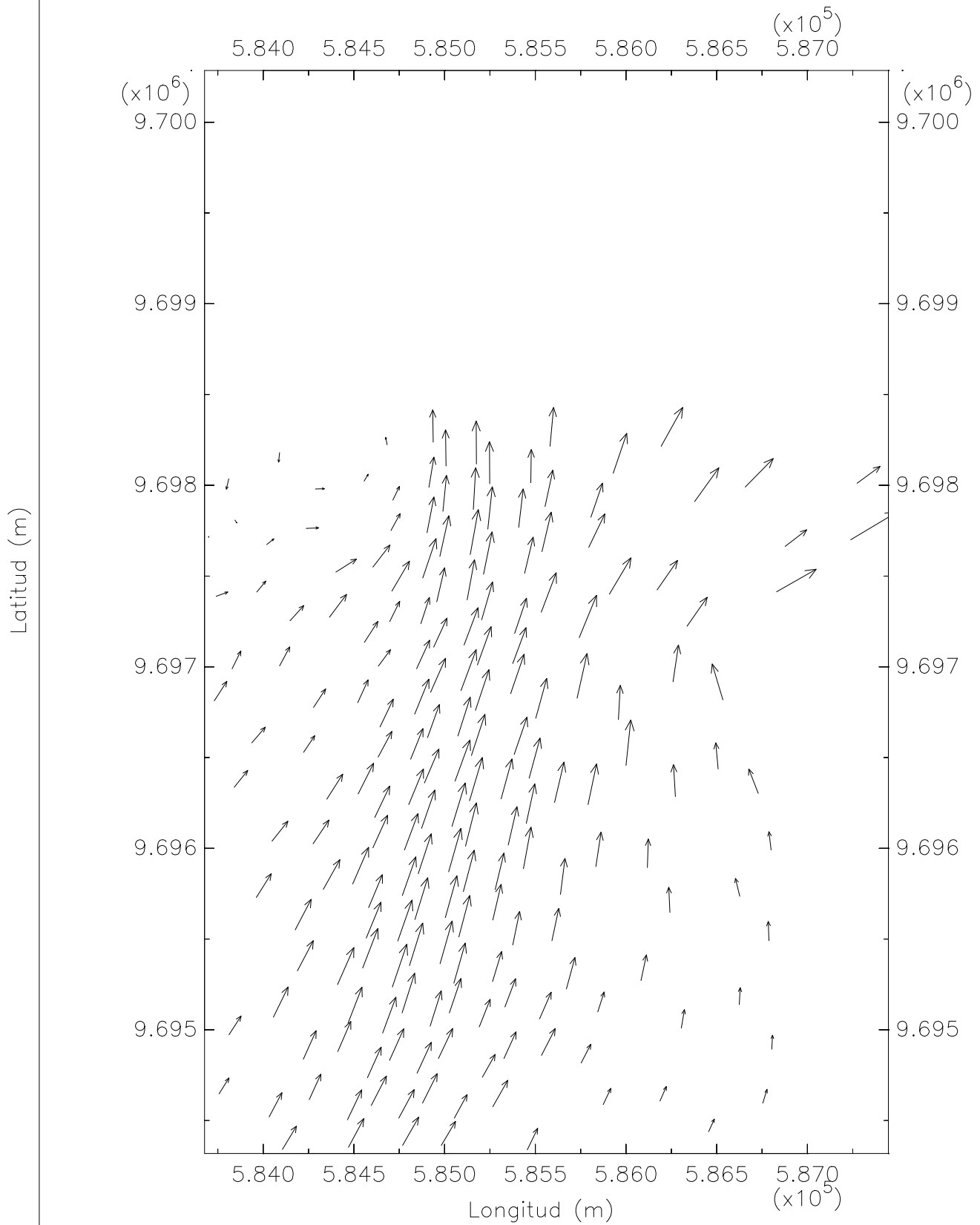
Bajo condiciones de oleaje y llenante



Zona 1 Tramo 2 Profundidad

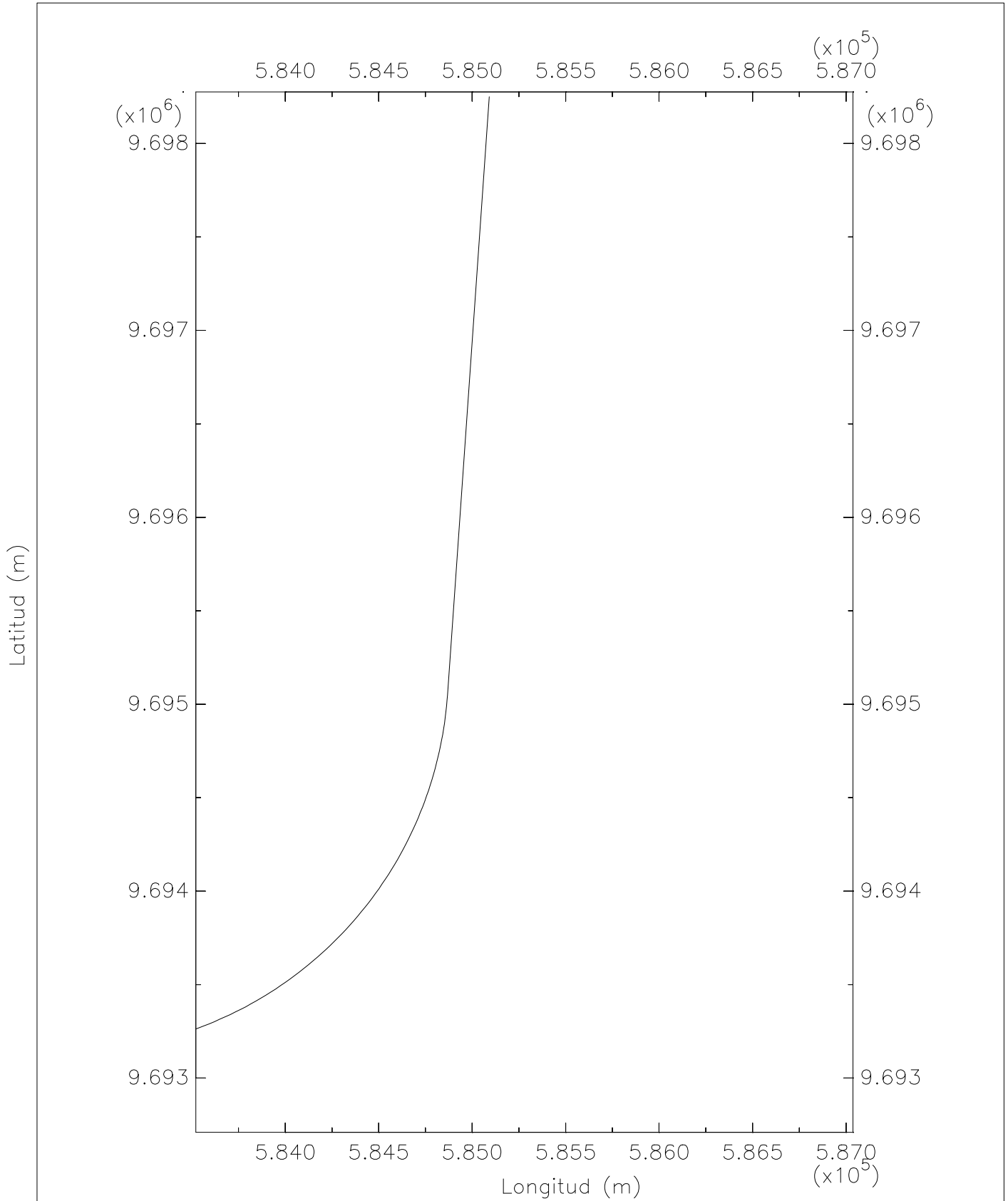




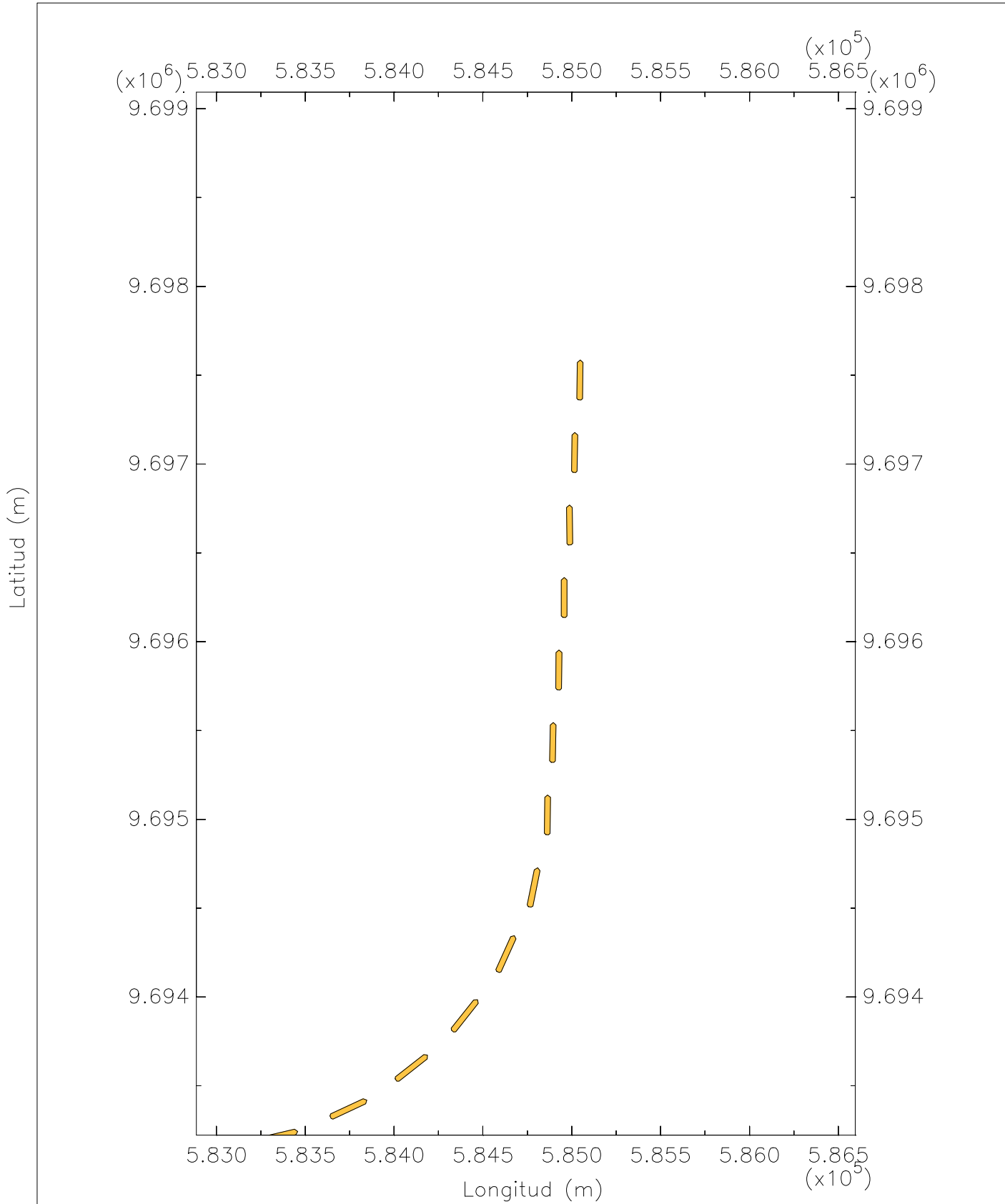


Zona 1 Tramo 2 Corriente

→ 0.500 m/s



Zona 1 Tramo 3 Eje canal



Z1T30yV Trayectoria del barco granelero en flujo

